



• • , ,

3 4.

1.

2.

3.

1 // .—1999.— 2.— .33-39.

2 — .: ,2004; // .: ,2002.— .59;

3 —2007.— 2.— .153-155. //

3 // .—2006.— 3.— .89-93; / .: ,2002.— 517 .

4 [.: ,2007.—160 .; //

—2002.— 11.— .45-49; /

// .—2000.— 1.— .36-39.

“ ”,

.

. .

..

”.

,

—

,

”

,

,

“

”

.

.

,

,

,

,

,

.

:

”

”

,

,

;

-

-

-

-

-

-

-

-

-

-

-

-

-

-

-

-

-

-

-

-

-

-

-

-

-

-

-

-

-

-

-

-

-

-

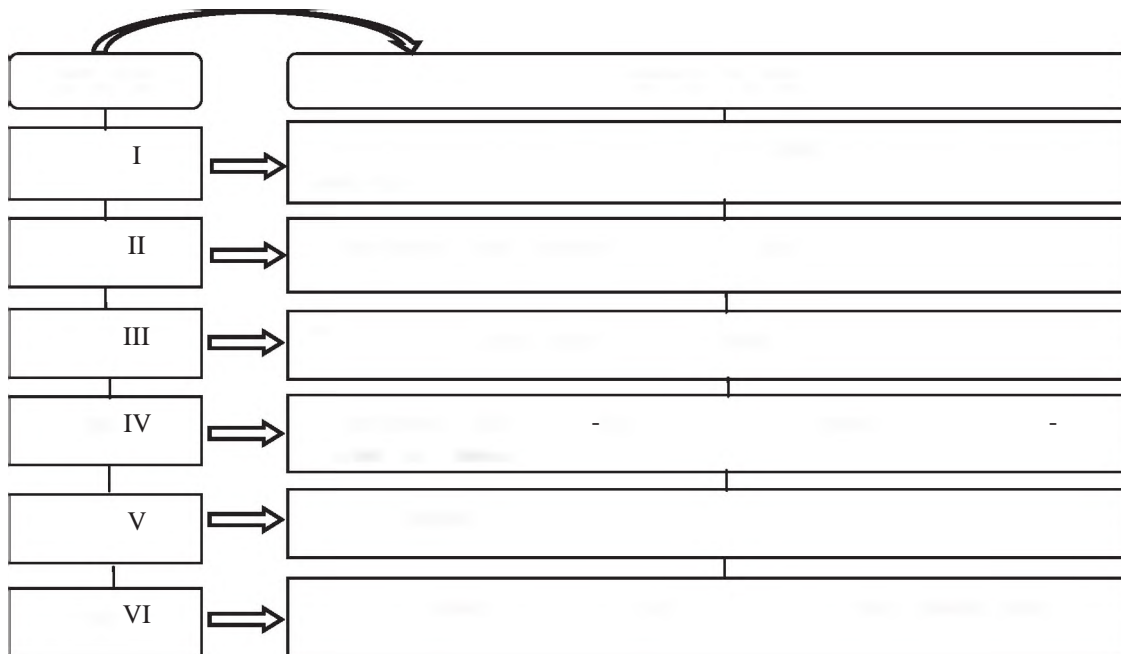
-

-

-

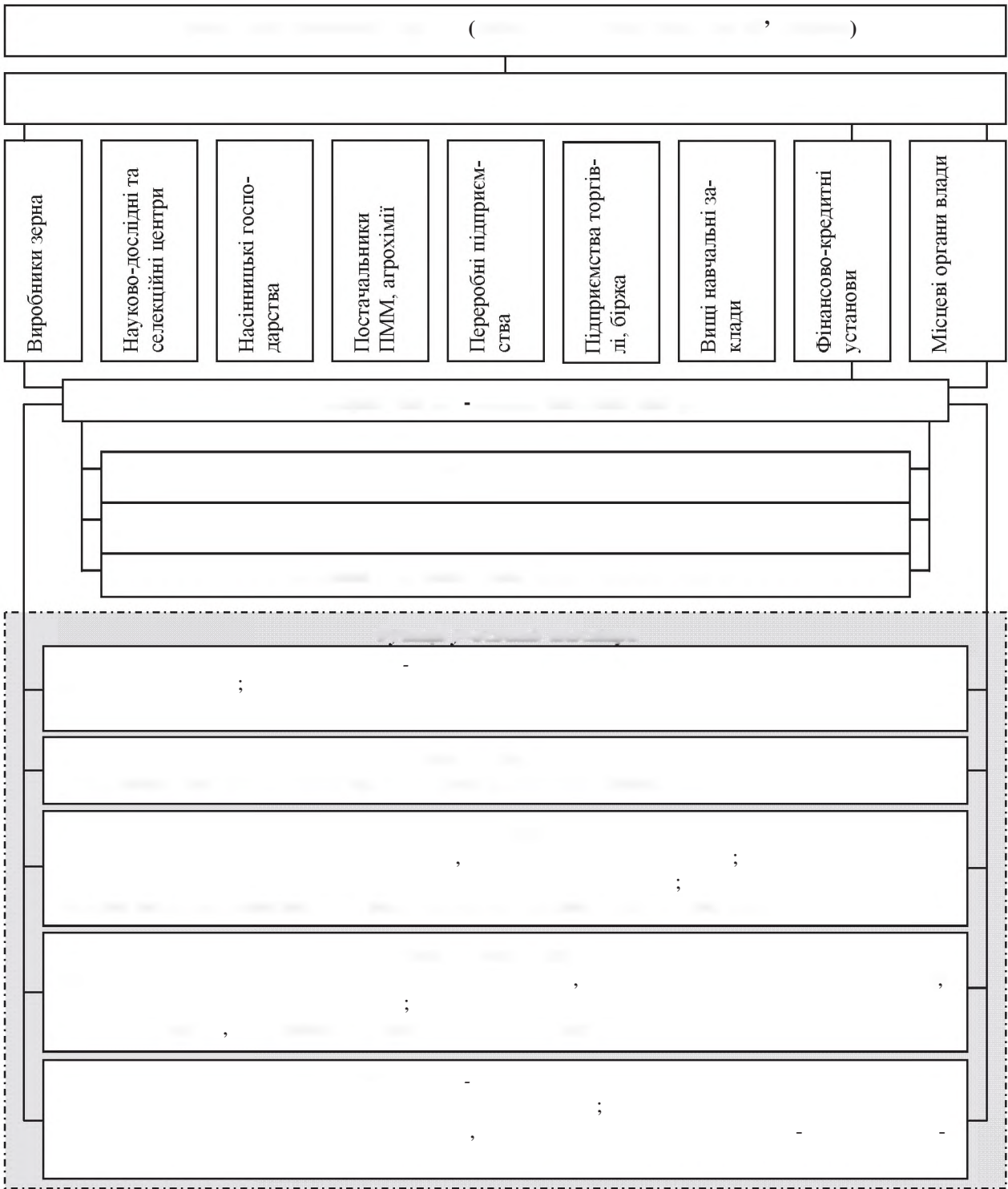
-

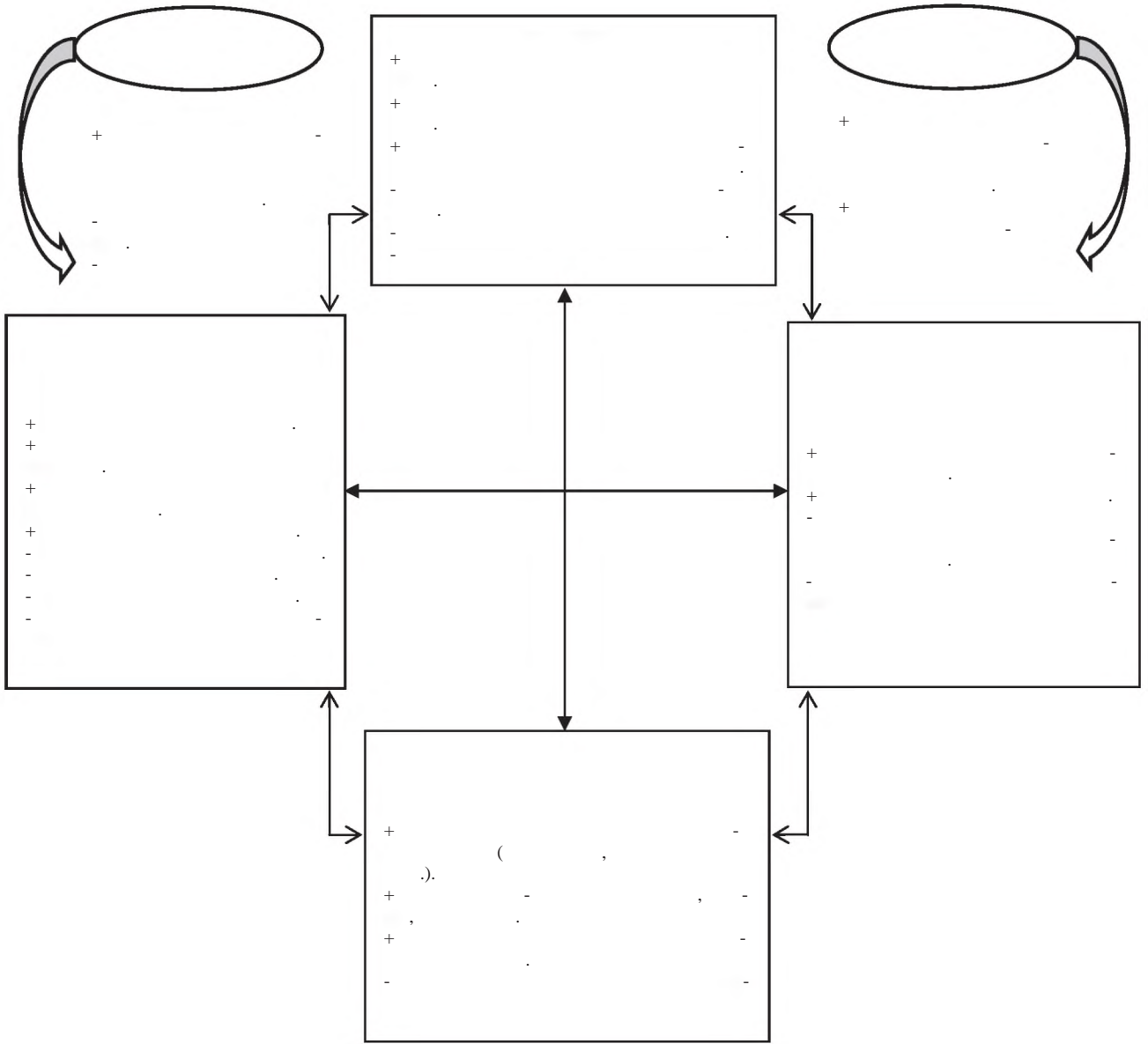
(. 1).



.1.

2.





.3.



The essence of the category apparatus of the grain cluster is determined. The theoretical aspects of the grain cluster formation are highlighted. The stages of the above cluster formation are determined. The organization structure of the regional grain cluster is suggested.
